

# COVID-19 VACCINE: Priority Groups for Phase 1

**+ Frontline Healthcare Workers** (working in an emergency department, ICU, COVID unit, or general acute care)

**+ Long-Term Care Facility Healthcare Workers**

**A**



**B**

**+ Long-Term Care Residents** (nursing home and assisted living)

**+ Other healthcare workers, including laboratory and clinic staff**

**+ Public Health Workers**

**+ Emergency Medical Services**

**+ Law Enforcement**

**+ Correctional Officers**

**C**



**D**

## WE ARE CURRENTLY HERE

**+ Persons Aged 65 Years and Older - Starting w/those 80 years and older (age to be lowered in coming weeks)**

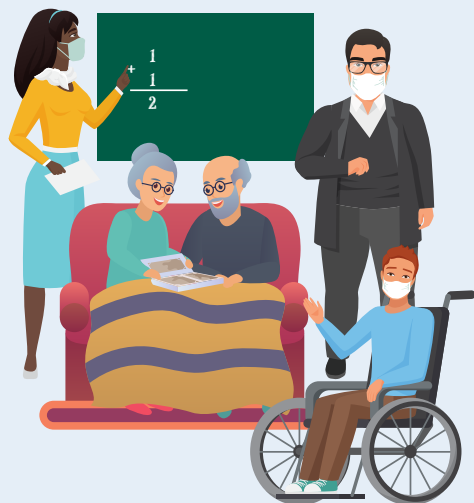
**+ High Risk Patients - dialysis, post-transplant, and active cancer**

**+ High Risk Residents in Congregate Settings, Residents in Licensed Independent Living Facilities, and Residents of Licensed Group Homes**

**+ Persons with 2 or More Underlying Medical Conditions**

**+ Teachers and Other School/College Staff**

**+ Funeral Service Workers**



**+ Fire Service Personnel**

**+ Other Critical Infrastructure Workers, including water and wastewater, energy, finance, food service, food and agriculture, legal, manufacturing, shelter and housing, transportation and logistics, information technology and communications**

[Click for More Information on Critical Infrastructure Sectors](#)

**E**



Due to limited allocation of the vaccine, the South Dakota Department of Health will use COVID-19 infection rates and will follow recommendations from the Advisory Committee on Immunization Practices (ACIP) to guide which counties will receive the vaccine first.



SOUTH DAKOTA DEPARTMENT OF HEALTH

[covid.sd.gov](https://covid.sd.gov)

# COVID-19 Vaccine: Expected Vaccine Availability in South Dakota

Phase	Population Group	January	February	March	April	May-December
1A	Frontline healthcare workers and long-term care facility healthcare workers					
1B	Long-term care residents					
1C	EMS, public health workers, and other healthcare workers (lab & clinic staff)					
	Law enforcement, correctional officers					
we are here 1D	Persons aged 65 years and older <i>Starting w/those 80 years of age and older (Age to be lowered in coming weeks)</i>					
	High risk patients - dialysis, post-transplant, and active cancer					
	High risk residents in congregate settings					
1D	Persons with 2 or more underlying medical conditions					
	Teachers and other school/college staff					
	Funeral service workers					
1E	Fire service personnel					
	Includes public-facing workers in essential and <a href="#">critical infrastructure</a>					
Phase 2	All others 16 years and older					

 Estimated Vaccine Availability

Note: Tribal vaccine allocation & administration is handled by the [IHS](#)  
 Veteran vaccine allocation & administration is handled by the [VA](#)

Due to limited allocation of the vaccine, the South Dakota Department of Health will use COVID-19 infection rates and will follow recommendations from the Advisory Committee on Immunization Practices (ACIP) to guide which counties will receive the vaccine first.



SOUTH DAKOTA DEPARTMENT OF HEALTH

[covid.sd.gov](https://covid.sd.gov)